

FOR LEASE

500± Sq. Ft. Office Space



524 Main Street, Suite 207 • Woodland, CA

Private Offices on Second Floor
Located in Historic Downtown Woodland
Walking distance to City Hall, County Administration Building
Close to restaurants and shopping.
Front and Back Entry for Privacy
No Elevator

Rent Includes: Water/Sewer, Garbage and PG&E

Lease Rate: \$800.00/Month

SALLING PROPERTIES INC.

DRE No. 02201437

REAL ESTATE SALES, LEASING & PROPERTY MANAGEMENT

20 N. East Street, Suite 101, Woodland, CA 95776

Phone: (530) 666-5485 Website: www.Sheffield-RealEstate.com

E-Mail: sallingproperties@kathysallingrealtor.com

The information contained herein has been obtained from sources we deem reliable. We cannot, however, assume responsibility for its accuracy.

Listing Agent: **Bryan Sheffield, Agent**
CalBRE: **02065645**
Phone: **(530) 219-0281**
E-Mail: **bsheffield100@gmail.com**

500± Sq. Ft. Office Space



SALLING PROPERTIES INC.

DRE No. 02201437

REAL ESTATE SALES, LEASING & PROPERTY MANAGEMENT

20 N. East Street, Suite 101, Woodland, CA 95776

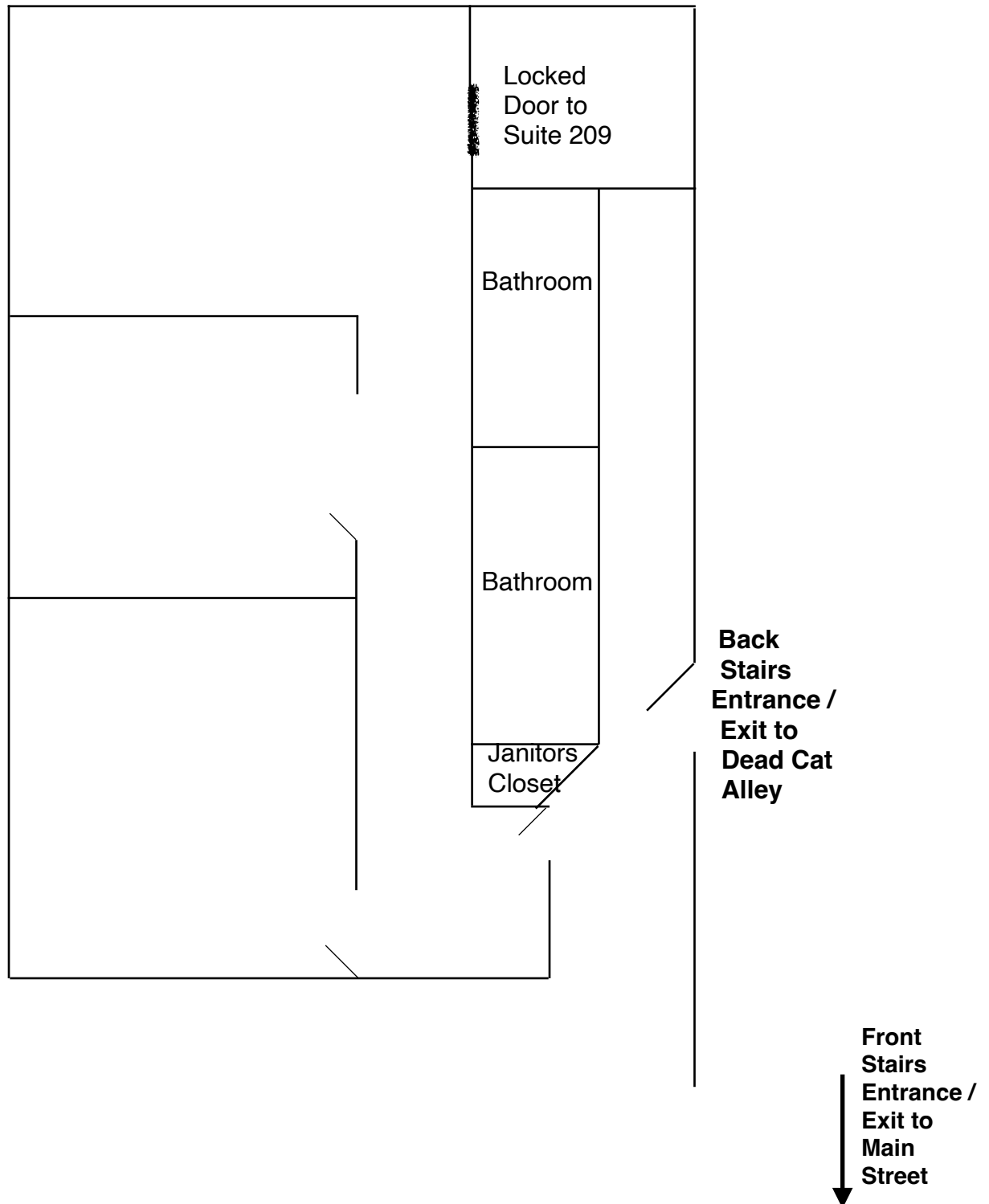
Phone: (530) 666-5485 Website: www.Sheffield-RealEstate.com

E-Mail: sallingproperties@kathysallingrealtor.com

The information contained herein has been obtained from sources we deem reliable. We cannot, however, assume responsibility for its accuracy.

Listing Agent: **Bryan Sheffield, Agent**
CalBRE: **02065645**
Phone: **(530) 219-0281**
E-Mail: **bsheffield100@gmail.com**

500± Sq. Ft. Office Space
524 Main Street, Suite 207 • Woodland, CA



*Drawing Not To Scale

SALLING PROPERTIES INC.

DRE No. 02201437

REAL ESTATE SALES, LEASING & PROPERTY MANAGEMENT

20 N. East Street, Suite 101, Woodland, CA 95776

Phone: (530) 666-5485 Website: www.Sheffield-RealEstate.com

E-Mail: sallingproperties@kathysallingrealtor.com

The information contained herein has been obtained from sources we deem reliable. We cannot, however, assume responsibility for its accuracy.

Listing Agent: **Bryan Sheffield, Agent**
CalBRE: **02065645**
Phone: **(530) 219-0281**
E-Mail: **bsheffield100@gmail.com**